



D3H/75 - Lincat Seal 350 Series Counter-top Heated Merchandiser - W 750 mm - 0.77 kW

Keep hot meats, pasties, pies and other foods at the perfect temperature with the Seal 350 Range Heated Merchandiser.

- ✓ Elegant extruded aluminium frames and metallic silver finish enhance display without detracting from contents
- ✓ Precise thermostatic control up to 95°C with digital display of cabinet temperature ensures food is maintained at a safe temperature
- ✓ Minimum food holding temperature of 72°C
- ✓ Humidity feature prevents food drying out - food stays in optimum condition for longer, reducing waste
- ✓ All-round visibility to maximise food sales potential
- ✓ Daylight-balanced illumination to enhance display of contents with easy change clip-in fluorescent light tubes

Specifications

Summary		Power and Performance	
Brand	Lincat	Total Power kW	0.77
Range	Seal	Temperature Range °C	72-95
Series	350 Series	IP Rating	IP33
Power Type	Electric	Temperature Control	Mechanical
Unit Type	Counter-top		
Available in UK Only	No		
UK Warranty	2 Years Parts and Labour Warranty		
Export Warranty	Contact your local dealer		
GTIN	5056105104018		

Key Specifications

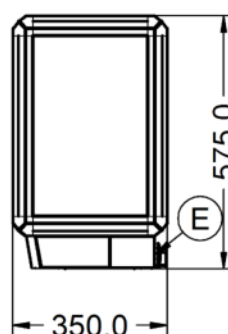
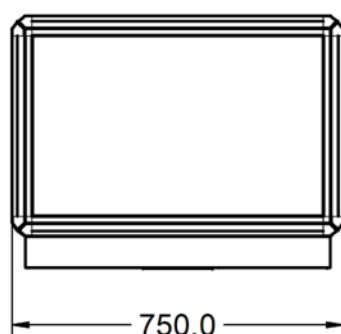
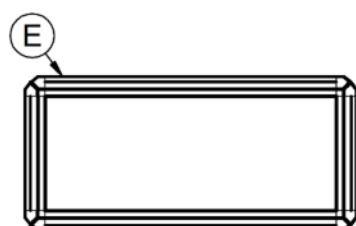
Number of Shelves included	2
Number of Shelf Positions	2
Service Type	Back service
Rack Type	Static
Type of Lighting	Fluorescent
Heated Base	Yes

Weights and Dimensions		Supply Connections	
Unit Height (External) mm	575	Requires Installation	No
Unit Width (External) mm	750	UK 3 Pin Plug	Yes
Unit Depth (External) mm	350	Requires Hardwiring	No
Shelf Dimensions Width mm	650	Electrical Supply Rating Watts	770
Shelf Dimensions Depth mm	275	Single Phase Amps	3.3
Net Weight Kg	32	Single Phase Voltage	230

Shipping

Packed Weight Kg	35.2
Packed Height cm	72
Packed Width cm	85
Packed Depth cm	45

Technical Picture



Lincat Limited

Whisby Road,
Lincoln, LN6 3QZ,
United Kingdom

Company No: 2175448

A member company of



Customer Care

Tel: +44 1522 875500
Email: care@lincat.co.uk

Export Customers

Tel: +44 1522 875536
Email: export@lincat.co.uk

Opening Hours

Monday – Friday:
8.30am – 5pm