



## GS7/N - Lincat Silverlink 600 Natural Gas Counter-top Griddle - Steel Plate - W 750 mm - 7.5 kW

Whether you're cooking eggs, bacon, burgers or vegetables, the versatile Silverlink 600 Gas Griddle won't let you down.

- ✓ 12 mm thick machined steel plate providing even heat distribution and an easy to clean surface
- ✓ Thermostatically controlled to give accurate temperatures during the cooking process for consistent results
- ✓ Two separately controlled heat zones give you the option of operating either zone independently to provide a smaller cooking area during quiet periods as well as offering versatility when cooking two separate meals simultaneously
- ✓ The plate is fully welded into the frame to prevent leaks and places where food and carbon can build up
- ✓ Front mounted control for easy of use during cooking
- ✓ Piezo ignition for easy lighting of the burners
- ✓ Flame failure device for maximum safety

### Specifications

Summary		Power and Performance	
Brand	Lincat	BTU per Hour	25,590
Range	Silverlink 600	Total Power kW	7.5
Power Type	Gas	Cooking Area (Width x Depth) mm	712 x 405
Gas Type	Natural Gas	Temperature Control	Mechanical
Unit Type	Counter-top		
Available in UK Only	No		
UK Warranty	2 Years Parts and Labour Warranty		
Export Warranty	Contact your local dealer		
GTIN	5056105104926		

Key Specifications		Capacity	
Number of Heat Zones	2	Product Output per Hour	190 x 115g [4oz] burgers [frozen], 140 x 225g [8oz]
Grill Plate Surface Type	Smooth		
Grill Plate Material	Steel		

Weights and Dimensions		Supply Connections	
Unit Height (External) mm	415	Requires Installation	Yes
Unit Width (External) mm	750	Requires Electrical Supply	No
Unit Depth (External) mm	650	Gas Connection BSP	1/2"
Net Weight Kg	54	Gas Consumption at full rate Natural m³ per Hour	0.71
		Gas Pressure Natural mbar	16.0
		Total heat input at full rate Natural kW	7.5
		Total heat input at full rate Natural BTU per hour	23,900

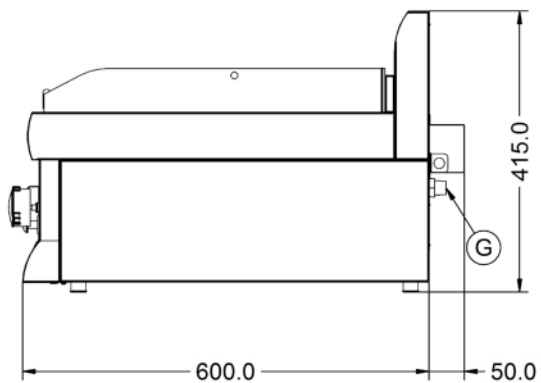
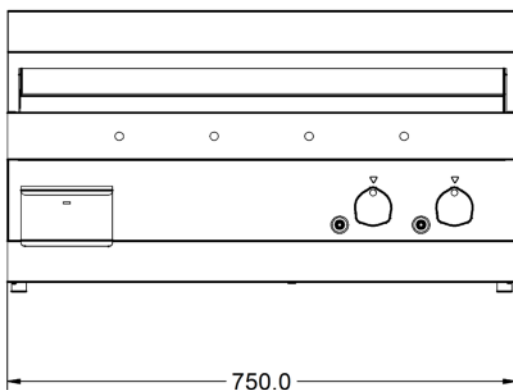
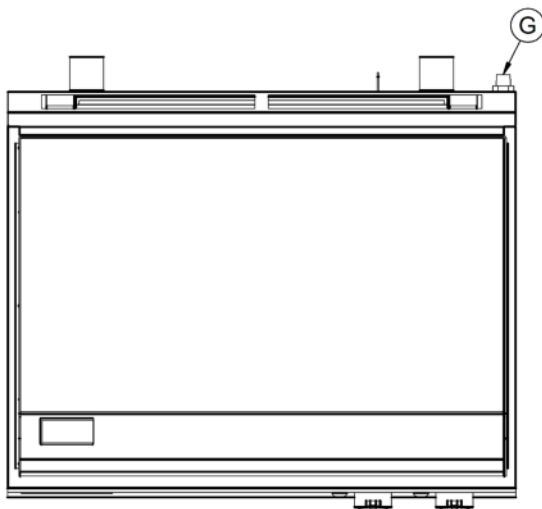
### Shipping

Packed Weight Kg	59.4
Packed Height cm	63.5
Packed Width cm	85.5
Packed Depth cm	70

## Available Accessories

<b>CH01</b>	Caterflex Hose 1/2" - 1 Metre - for use with units up to 66,000 BTU
<b>CH02</b>	Caterflex Hose 1/2" - 1.5 Metre - for use with units up to 56,000 BTU
<b>CN7</b>	Lincat Silverlink 600 Free-standing Ambient Open-Top Pedestal without Doors - W 750 mm
<b>SB7</b>	750 GRIDDLE SPLASHB
<b>SLS7</b>	Lincat Silverlink 600 Free-standing Floor Stand - for units W 750 mm

## Technical Picture





#### Lincat Limited

Whisby Road,  
Lincoln, LN6 3QZ,  
United Kingdom

**Company No:** 2175448

A member company of



#### Customer Care

**Tel:** +44 1522 875500

**Email:** [care@lincat.co.uk](mailto:care@lincat.co.uk)

#### Export Customers

**Tel:** +44 1522 875536

**Email:** [export@lincat.co.uk](mailto:export@lincat.co.uk)

#### Opening Hours

**Monday – Friday:**

8.30am – 5pm