



HCL6 - Lincat Silverlink 600 Free-standing Heated Pedestal with Legs and Doors - W 600 mm - 0.5 kW

Designed to suite with other products in the Silverlink 600 range, the Heated Pedestal (top and legs) features an on/off switch and thermostatic control, making it ideal as a plate warmer.

- ✓ Designed to suite with the Silverlink 600 range
- ✓ Features an on/off switch and thermostatic control, making them ideal as plate warmers
- ✓ Silverlink 600 counter-top units are securely attached to pedestals by means of fixing screws supplied
- ✓ Adjustable shelf provides flexibility for storing bulky items
- ✓ Adjustable legs for perfect alignment even on uneven floors
- ✓ Doors are designed to fit left or right handed for flexibility in kitchen planning

Specifications

Summary		Power and Performance	
Brand	Lincat	Total Power kW	0.50
Range	Silverlink 600	Temperature Range °C	70 [constant]
Power Type	Electric	Temperature Control	Mechanical
Unit Type	Free-standing		
Available in UK Only	No		
UK Warranty	2 Years Parts and Labour Warranty		
Export Warranty	Contact your local dealer		
GTIN	5056105100980		

Key Specifications		Weights and Dimensions	
Number of Shelves included	1	Unit Height (External) mm	668
Number of Shelf Positions	3	Unit Width (External) mm	600
		Unit Depth (External) mm	600
		Height (Internal) mm	422
		Width (Internal) mm	598
		Depth (Internal) mm	566
		Shelf Dimensions Width mm	550
		Shelf Dimensions Depth mm	530
		Net Weight Kg	27.8

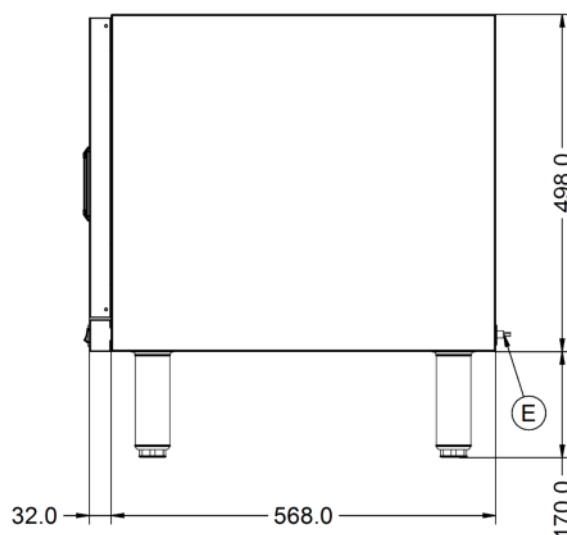
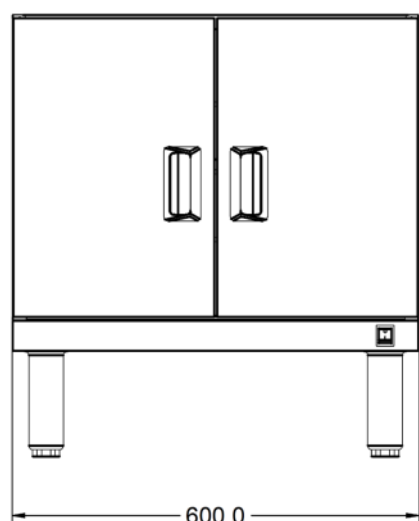
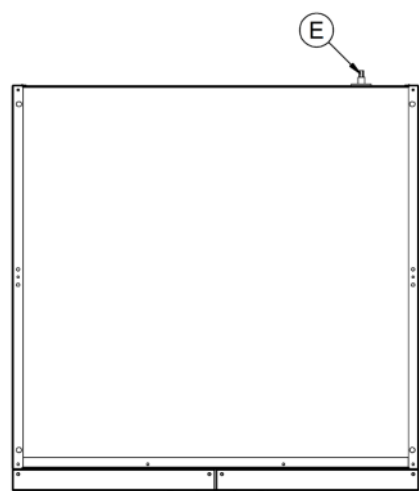
Supply Connections		Shipping	
Requires Installation	No	Packed Weight Kg	30.58
Requires Electrical Supply	Yes	Packed Height cm	88.3
UK 3 Pin Plug	Yes	Packed Width cm	70.3
Requires Hardwiring	No	Packed Depth cm	70.3
Electrical Supply Rating Watts	500		
Single Phase Amps	2.2		
Single Phase Voltage	230		

Available Accessories

PSH6

600 PEDESTAL SHELF

Technical Picture



Lincat Limited

Whisby Road,
Lincoln, LN6 3QZ,
United Kingdom

Company No: 2175448

A member company of



Customer Care

Tel: +44 1522 875500

Email: care@lincat.co.uk

Export Customers

Tel: +44 1522 875536

Email: export@lincat.co.uk

Opening Hours

Monday – Friday:

8.30am – 5pm