






# **NISBETS** **ESSENTIALS**

## **Stainless Steel Table**

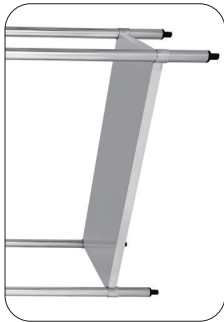
### Assembly Instructions



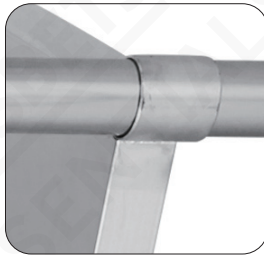
**Model:**  
**DF677 / CH059**

i		x1	iv		x1
ii		x4	v		x1
iii		x16			

A



B



C



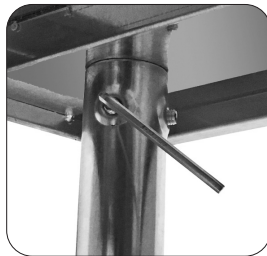
D



E



F



## Safety Instructions

Whilst all care has been taken to remove sharp edges, care must be taken when cleaning or handling the table to prevent risk of injury from exposed metal edges.

Do not overload the table top or shelf causing it to bend.

## Product Description

DF677 - Nisbets Essentials St/St Table - 900(H) x 1200(W) x 600(D) mm

CH059 - Nisbets Essentials St/St Table - 900(H) x 800(W) x 600(D) mm

## Assembly

**Note:** Be sure to check all packaging materials for any small parts that may have come loose during transportation.

1. Remove all protective film, taking care to avoid scratching the surfaces.
  2. Place the shelf (i) on it's side on the floor.
  3. Insert the legs (ii) into the sockets situated at each corner of the shelf, lining up the socket with the line marked on the leg [A].
  4. Use grub screws (iii) to loosely fix the shelf to the legs with the Allen key (iv), then stand upright [B, C, D].
  5. Position the table top (v) onto the legs, ensuring each leg is firmly located in its corresponding corner socket [E].
  6. Fix the table top in place using the remaining grub screws. Ensure the table top is both level and securely fixed [F].
- **Note:** Adjust the feet if necessary to level the table.

Before using for the first time Nisbets Essentials recommend the table is cleaned thoroughly with a suitable cleaning agent. Remove all cleaning residues and dry thoroughly.

## Cleaning

- Clean the table regularly using a cleaning agent suitable for use with stainless steel.
- Always remove cleaning agent residue. This can discolour the surface of the table.
- Never leave the table surface damp as this can cause discolouration.

All rights reserved. No part of these instructions may be produced or transmitted in any form or by any means, electronic, mechanical, photocopying, recording or otherwise, without the prior written permission of Nisbets Essentials.

Every effort is made to ensure all details are correct at the time of going to press, however, Nisbets Essentials reserve the right to change specifications without notice.



UK		Fourth Way, Avonmouth, Bristol, BS11 8TB United Kingdom
Eire	+44 (0)845 146 2887	42 North Point Business Park, New Mallow Road, Cork, Ireland
NL	040 - 2628080	
FR	01 60 34 28 80	
BE-NL	0800-29129	

BE-FR	0800-29229	
DE	0800 - 1860806	
ES	901-100 133	
AU	1300 225 960	15 Badgally Road, Campbelltown, 2560, NSW, Australia

# **NISBETS** **ESSENTIALS**



<http://www.nisbets.com/> 

DF677-CH059\_EN\_A5\_v2\_20220311